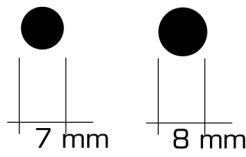


TUTORI

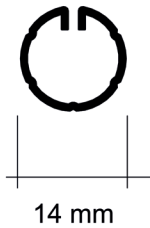
Tutore in ferro grezzo

diametro mm
7,0
8,0

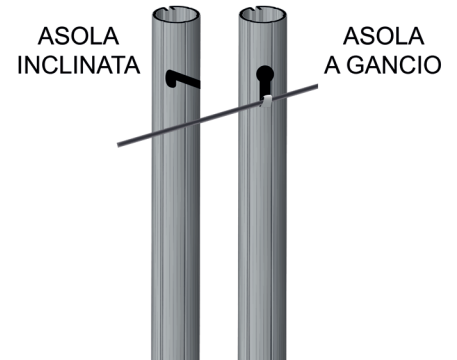


Tutore in lamiera zincata

DA 14 MM
Spessore mm
0,5
0,6
0,7
0,8



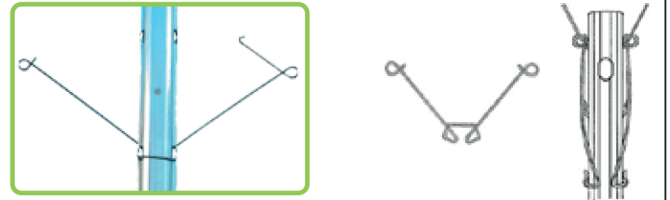
DA 6 MM
Spessore mm
0,5
0,6



MOLLE E GANCI

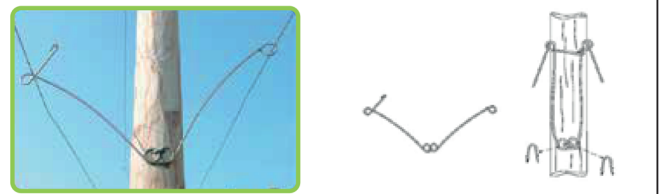
Molla distanziatrice per palo di metallo

tipologie	INOX
da incastrare	302



Molla distanziatrice per palo di legno da inchiodare

aisi	filo Ø
302	2,8 mm



Gancio "blocca filo livio" inox

In acciaio inox

Per tutori Ø mm
6-10
10-16
25-30



Gancio "blocca filo livio" zincato

In acciaio inox

Per tutori Ø mm
6-10
10-16
25-30

